



RAHMA WORLDWIDE

AID & DEVELOPMENT

ORGANIZATION PROFILE

2018-
Mid 2019

A Letter from the CEO

DEAR GENEROUS DONORS,

On behalf of Rahma Worldwide we thank you for your continued support and dedication to our mission to expand our outreach aid, development programs and services. We hope you continue trust us with your support and reach worthy causes worldwide.

Many events around the world needed our response such as the Yemen Crisis where more and more resources were directed toward water delivery, food security and more than \$30 million worth of medical aid to Yemen and with your support we are able to assist more families during these crises.

Other areas of concern were the crisis in Syria, Gaza and the millions of displaced families in Lebanon and Jordan. To date, we have touched more than 7.8 million lives through our humanitarian programs. In the coming years, our goals are to continue increasing the number of areas we impact, and beneficiaries we serve. We will remain on course to ease the pain and suffering of all people regardless of religion, background, gender or nationality.

I would like to extend my appreciation to our donors and their commitment to provide people with the opportunity to be more efficient, and sustainable. Also, special thanks to our dedicated staff members who are working in exceptionally risky circumstances to fulfill the mission of bringing sanctuary to those in need. With YOU, the impossible is possible!

Dr. Chadi Zaza
Chairman



DR. CHADI ZAZA CHAIRMAN

Vision

A world in where every community is parovided the opportunity to be more efficient and sustainable.

Mission

Serving humanity by helping the most vulnerable through providing immediate response during the crisis, implementing quality programs which achieve social justice and development, as well as contributing to resilience reinforcement, stability and recovery capacity of the affected communities.



2018-2019



ORPHAN SPONSORSHIP

5,000
Beneficiaries



NON- FOOD ITEMS

200+
Containers



PROTECTION

9,000
Beneficiaries



EDUCATION

12,500
Beneficiaries



FOOD SECURITY
AND LIVELIHOOD

175,000
Food Baskets



HEALTH

38,000
Families



ADVOCACY WORK

2,500
Beneficiaries



EID AL ADHA & UDHIA

5,533 Eid Gifts
5,150 Udhia



WATER

1,150,000
Beneficiaries
2018-Mid 2019





DEVELOPMENT

Rahma Qasis & Recycling
Robotics for Disabled
Sewing & Crafts



EDUCATION

School Supplies
School Rehabilitation



LOGISTICS

CONTAINER SHIPMENT

Clothing & Shoes
Winterization



HEALTH

Health Supplies
Medicine & Equipment
Mobile Clinics



WATER AND SANITATION

Drinking Water
Water Wells

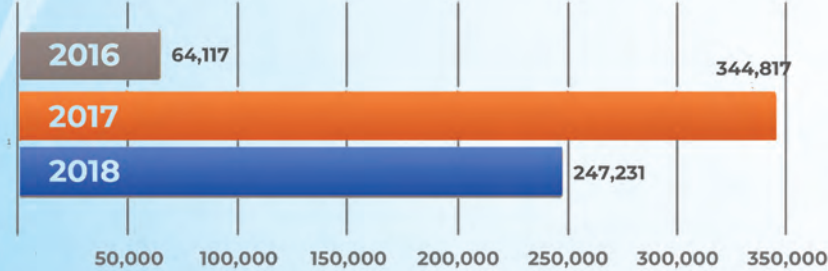


FOOD SECURITY

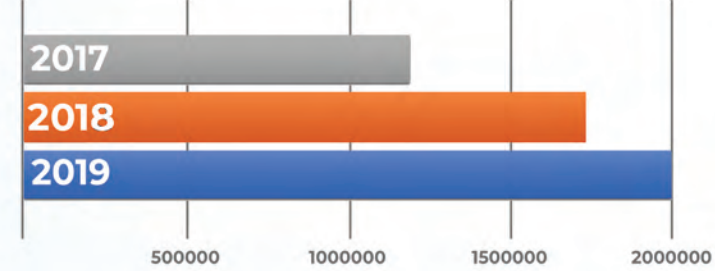
Food Baskets & Baby Formula
Soup Kitchens
Rahma Bakery

Total Donations Distributed

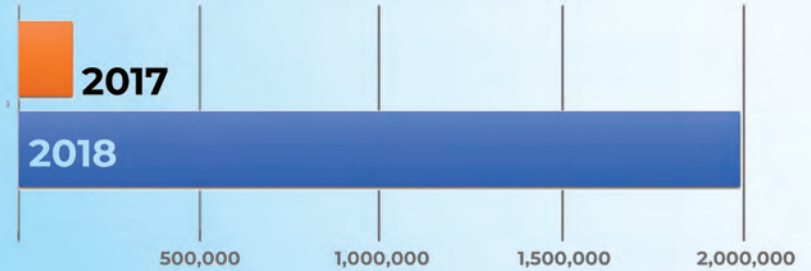
Clothing Beneficiaries



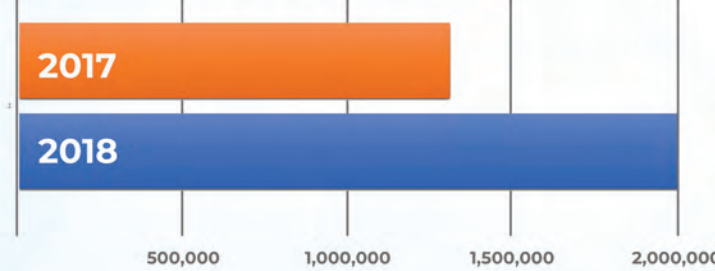
Medical Relief



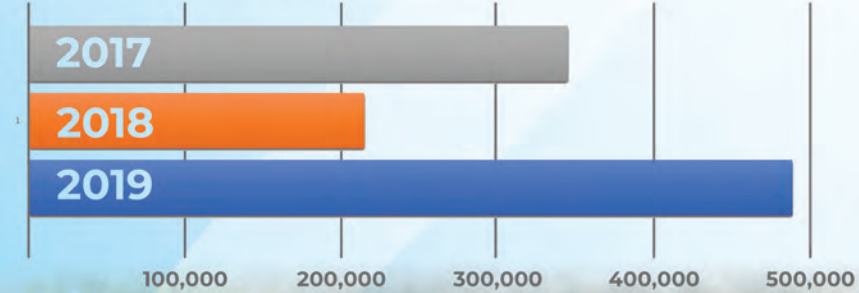
Fuel Distribution



Food Security

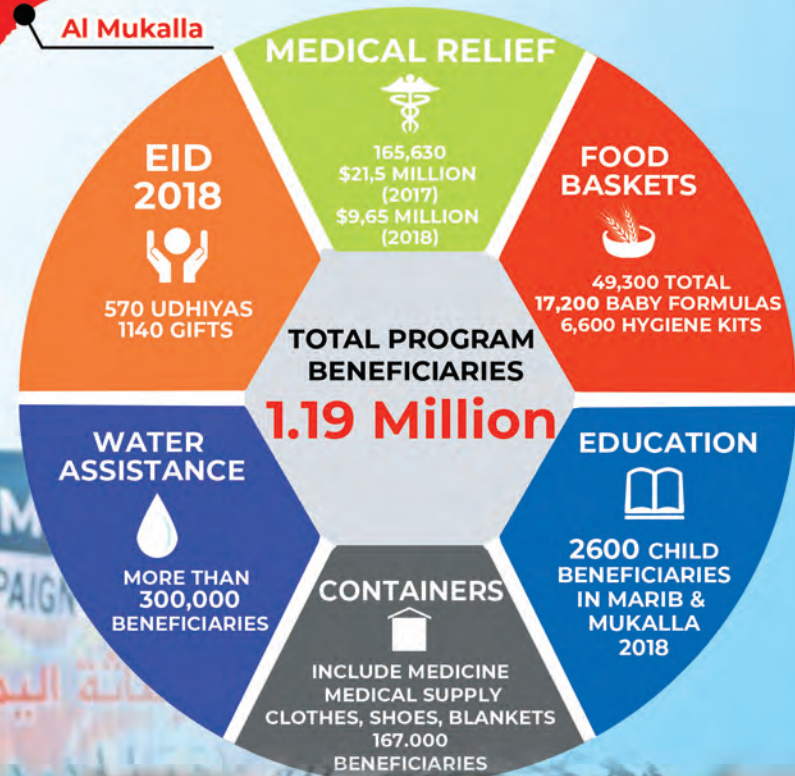
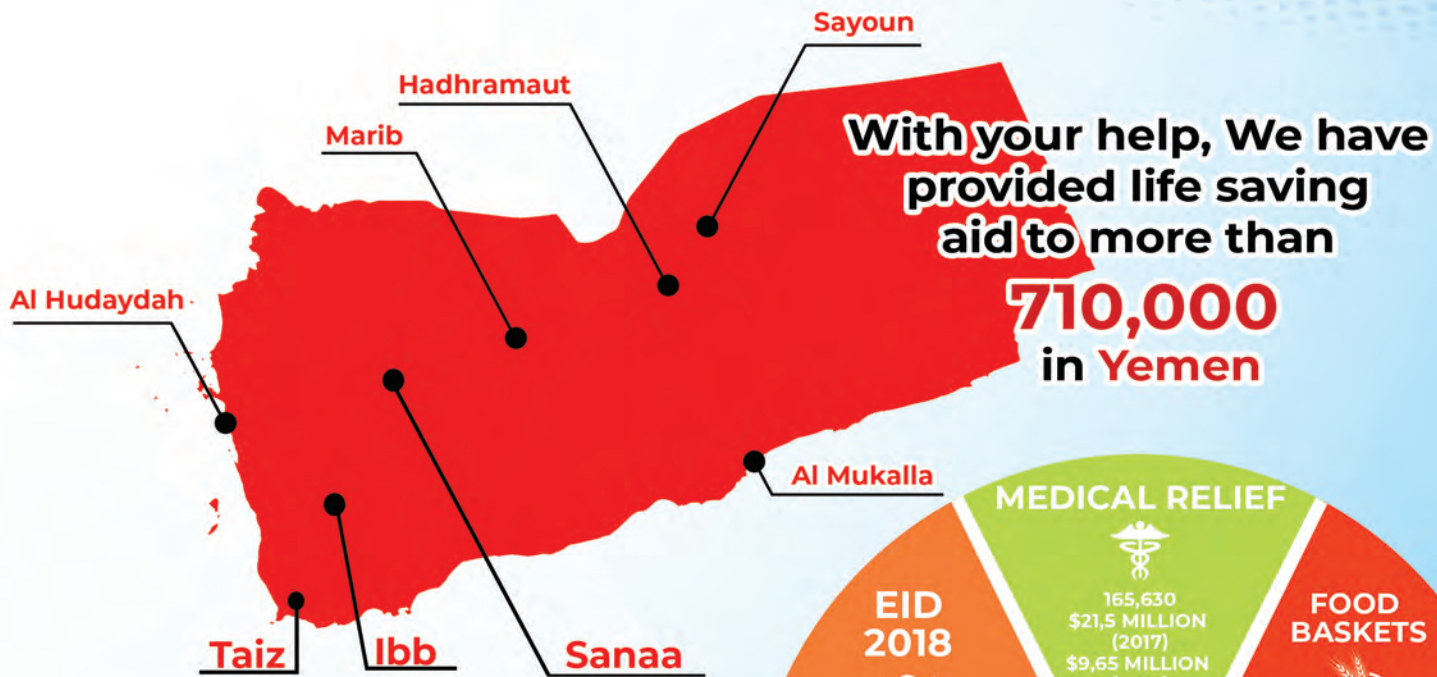


Water Assistance



Yemen Relief

WHERE WE WORK



Water & Fuel



Rahma's Water, Sanitation, and Hygiene (WASH) program targets disadvantaged women, children of Syria, Yemen, and refugee camps in Lebanon, Turkey and Jordan. This program provides access to safe drinking water, adequate sanitation and hygiene education. Having these resources available decreases the chance of disease, and death. Thousands of complete sanitation kits have been distributed to women and children that included hygiene products, diapers, toothbrushes, toothpaste, soap, and much more.

DISTRIBUTION TOTAL 2018 & 2019



Orphan Sponsorship

Our orphan sponsorship program serves orphans and their families in Syria, Yemen, Gaza, Ghana as well as the refugee camps in Lebanon, Jordan, and Turkey. Rahma Worldwide provides orphans with basic necessities such as food, shelter, clothing, education and healthcare to live comfortably. We began the program in 2015 and now we have more than 350 orphans sponsored. Our goal is to support an additional 2,000 and with your help, we know this can be accomplished.

When you sponsor an orphan you will provide him/her with food, clothing, medical coverage and schooling and depending on the area, you may be able to receive pictures, medical records, progress reports, and written letters from your orphan! Open your heart and commit to sponsoring one of these precious children today!

**Sponsor a child today for
\$60 per Month**



Food Security & Livelihood



We deliver life-saving aid to thousands of families and malnourished children in crisis afflicted areas, especially after the exponential increase in poverty levels and inflation making cost of basic necessities and food unaffordable.

Our teams on the ground risk their lives to reach families in besieged and hard-to-reach areas. Our typical food basket contains grains, rice, dry milk, sugar, beans, lentils, cooking oil and other items depending on area. Our staff and volunteers are recruited from the areas of operation, they're passionate about what they do, and able to navigate security conditions.

**4,250,321
Total Beneficiaries
2018 & 2019**





Warm the Children

During the harsh winter months, thousands of people around the world have to endure the freezing temperatures in sub-standard shelters, Rahma Worldwide works with displaced families and affected communities throughout the winter distributing life-saving winter-kits. These kits include blankets, coats, gloves, scarves, shoes, socks, firewood, and fuel and are distributed to help these families combat the unsuitable conditions.

With your support we can continue to help these families combat the unsuitable conditions they are unprepared for.

398,976
Total Beneficiaries
2018 & 2019



Ramadan Food Kitchens

Every year, we aim to feed 1 million meals to families in Ramadan. In 2018, more than one million meals were served. In 2019, four soup kitchens operated in Northern Syria and Lebanon feeding more than 514,000 individuals and the needy.

Total Beneficiaries
208,000



حملة مهجرين أهل القوطة
2018



Where We Work





RAHMA OASIS

One of the most ambitious project is to empower Syrian and Jordanian farmers to grow their own food in eco-friendly environment, create self-sufficiency farming models, and raise food production awareness & practices.

Farmers learn new agriculture methods to cultivate plants and eliminate the use of chemicals using natural methods



Refugee Assistance

In response to the influx of the refugees' resettlement in the United States, we responded with programs to assist newcomers and make them feel more at home in their new homeland. This was the first programs of its kind for Rahma in the USA. Community events and training were held to meet their neighbors and feel more integrated. In addition, workshops were held to provide resettlement information and guidance on legal matters, life in the USA and more. Assistance with rent and utilities were provided to many refugees who still find difficulty making ends meet. We continue to provide services to these families such as finding places to live and job training.

Your continued support is crucial in helping these families become more self-sufficient..





Infant Formula

In war-torn areas, the scarcity of food and infant formula has led to high levels of malnutrition as well as outbreaks of preventable illnesses among children under the age of 5. This program was specifically designed to distribute formula to families with infants in Syria, Yemen and other crisis-afflicted areas. It has helped reduce malnutrition in infants thus reducing the infant and child mortality rate.

103,405
Total Beneficiaries
2018 & 2019



Education

Eight years since the conflict, millions of children have been denied access to proper schooling. Hundreds of schools have been destroyed and countless others taken as shelters by families seeking a place to live. Most primary school age children are not in school and have no realistic hope of enrolling in one anytime soon.

Rahma Worldwide has partnered with Multi Aid Programs (MAP) to establish year-round schooling for hundreds of children in three different Syrian cities as well as a school in Lebanon. We also provided thousands of students in Yemen with school supplies and clothing. Donations to this program ensure children receive the assistance they need, and gives more children the opportunity to prosper.

12,500
Beneficiaries

Healthcare

Humanitarian aid is the backbone of Rahma Worldwide. We collaborate with various partner charities and medical organizations to provide medical supplies and medicine to hospitals in Syria, Yemen, Lebanon and countries in Africa.

In 2018, our teams in Yemen provided and distributed 4 containers of medicine and medical supplies to hospitals in Sayoun, Mukalla, and Aden worth \$9.6 million. In 2019, that number jumped to \$30 million. The campaign was featured on Adn's official newspaper.

Elsewhere, we provided mobile clinics to families in refugee camps in Syria as well as the Golan Heights area with life saving assistance with medicine and medical treatments through routine visits to their locations.

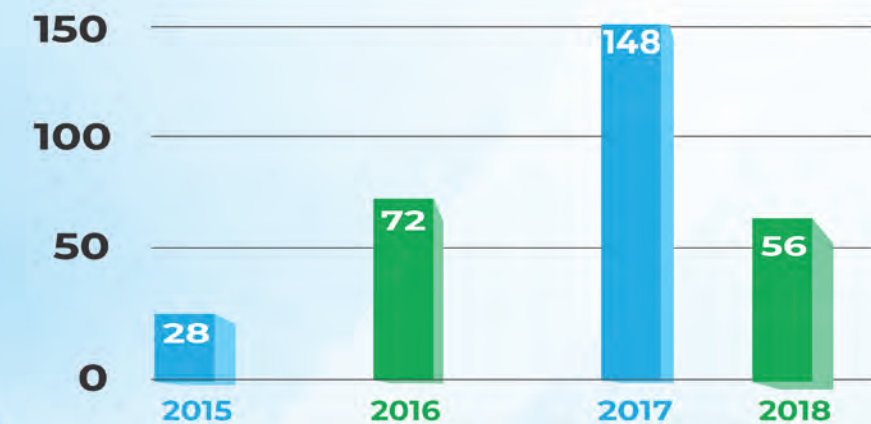
6 Fully equipped medical mobile clinics were delivered in collaboration with NPAC IF United Kingdom.



Container Shipments

Our logistical programs run ongoing donation drives year-around loading shipping containers destined for Yemen, Syria and Lebanon. Our Container shipments contain medical supplies for Hospitals, winter clothing, children supplies as well as housing supplies for displaced refugees and families.

Our outreach program spread nationwide with media coverage across multiple communities who came together to implement clothing drives for Yemen, Syria and Lebanon. The overwhelming response from these communities ensured more people received much needed aid. Mixed clothing, blankets, education supplies, medical supplies and toys were collected and shipped through our supply chain network and later distributed directly to families in need.



Udhia Project and Eid Al-Adha Campaign

As you celebrate Eid Al-Adha with your families, rest assured that the cost of your Udhia meat and Eid gifts and clothings has reached the thousands of needy families and childrens around the world.

You gave them the chance to celebrate with you!

After lots of planning and tireless effort, we've been able to reach hundreds of displaced families and children just in time for Eid celebration. The smiles at the end of it make it so worth the effort. Eid is all about promoting the virtue of giving and sharing with others.



Eid Al-Adha Campaign Total Annual Beneficiaries

- 2017 - **2,350**
- 2018 - **4,652**
- 2019 - **5,150**



Activities



We aim to empower women in crisis!

We currently support 450 women to become financially and economically independent. We provided more than 250 women with skills development through 17 vocational training fields and workshops in Al Rastan for 6 months. Additional training was conducted to improve cognitive and education levels to 190 women through language courses, hygiene, and care skills development.



Our Significant Donors and Partners



Thank You

Board Members & Financial Statement

BOARD MEMBERS



Dr. Chadi Zaza
Chairman
CEO & Founder



Adib Chouiki
Vice President
Co-Founder
Regional Manager



Rama Alhoussaini
Secretary



Belel Basatna
Treasurer



Essam Tinawi
Board Member
Lebanon Ops

OFFICERS

Ahmad Al Halabi
Director- US Headquarters

Iman Zaza
CEO- Turkey Office

Shaher AlShayeb
CEO - Jordan Office

Usama Alsaysna
Director - Jordan Office

Mohammad Kusaibati
Area Manager-Lebanon Office

Hassan Kusaibati
Area Manager-Yemen & Africa

Mohamed Abu Samhan
Africa Office

COMBINED STATEMENT OF FINANCIAL POSITION FOR 2018

Assets			Revenues	Support and Contributions	
Current Assets	Cash & Cash Equivalents	992,149		Contributions	3,975,361
	Advances & Prepayments	3,000		Donations in Kind	66,104,886
	Total Assets	995,149		Total Support and Other Contributions	\$ 70,080,247
Fixed Assets	Furniture, Equipment & Vehicle	23,259	Expenses	Programs Services	68,810,647
	Less: Accumulated Depreciation	(4,769)		Supporting Services	
	Net Fixed Assets	18,490		Fundraising	360,882
	TOTAL ASSETS	\$ 1,013,639		Administrative and General	162,350
Liabilities			Total Expenses		\$ 69,333,879
Current Liabilities	Accounts Payable	986		Increase in Unrestricted Net Assets	746,368
	Payroll Liabilities	2,317		Net Assets at Beginning of Year	263,968
Net Assets	Unrestricted Net Assets	1,010,336		Net Assets at End of Year	\$ 1,010,336
TOTAL LIABILITIES & NETASSETS		\$ 1,013,639			

YOU CAN HELP BY:

*BECOMING A
COMPANY
SPONSOR*

*ATTENDING &
HOSTING EVENTS*

DONATING

*BECOMING A
VOLUNTEER*

**RESTORING HOPE & SERVING THE MOST
VULNERABLE WITH COMPASSION AND MERCY**



RahmaRelief.org



info@rahmarelief.org



rahma.relief.foundation



rahma.relief



(248) 566 - 3111



**31119 Greenfield Rd,
Beverly Hills, MI 48025**